

Sensor holders

for clamp mountings with threaded holes GN 478 / GN 484

SPECIFICATION

Stainless Steel AISI 303
matt-shot blasted

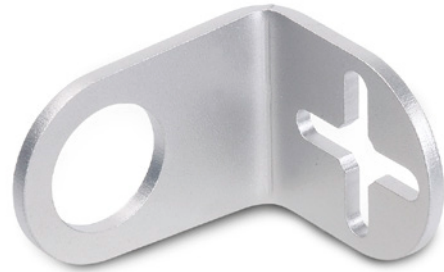
INFORMATION

The sensor holders GN 479 are designed for holding sensors attached with two lock nuts.

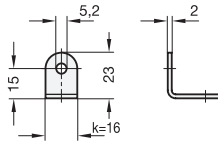
The attachment bore matches the central thread of clamp mountings GN 478 (see page 1884) and attachment clamp mountings GN 484 (see page 1892). For $k=30$, the cross-shaped slotted holes provide extra adjustability and allow the use of two fixing screws. Fixing screws have to be ordered separately.

TECHNICAL INFORMATION

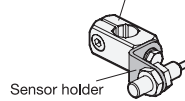
- Stainless Steel characteristics (see page A26)



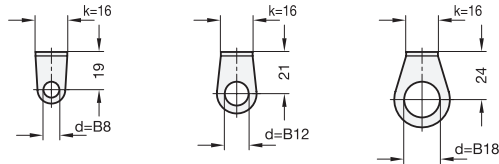
Swivel width $k=16$



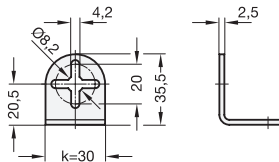
Clamp mounting GN 478



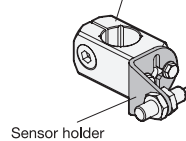
Front views for different bore- $\varnothing d$



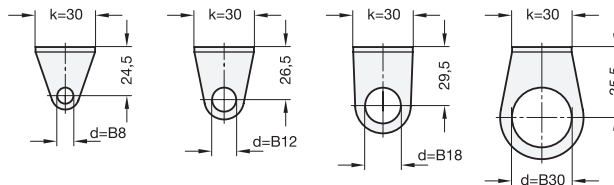
Swivel width $k=30$



Clamp mounting GN 478



Front views for different bore- $\varnothing d$



GN 479

STAINLESS STEEL

Description	d	k	⚖
GN 479-B8-16	B 8	16	9
GN 479-B8-30	B 8	30	24
GN 479-B12-16	B 12	16	10
GN 479-B12-30	B 12	30	26
GN 479-B18-16	B 18	16	13
GN 479-B18-30	B 18	30	30
GN 479-B30-30	B 30	30	36

